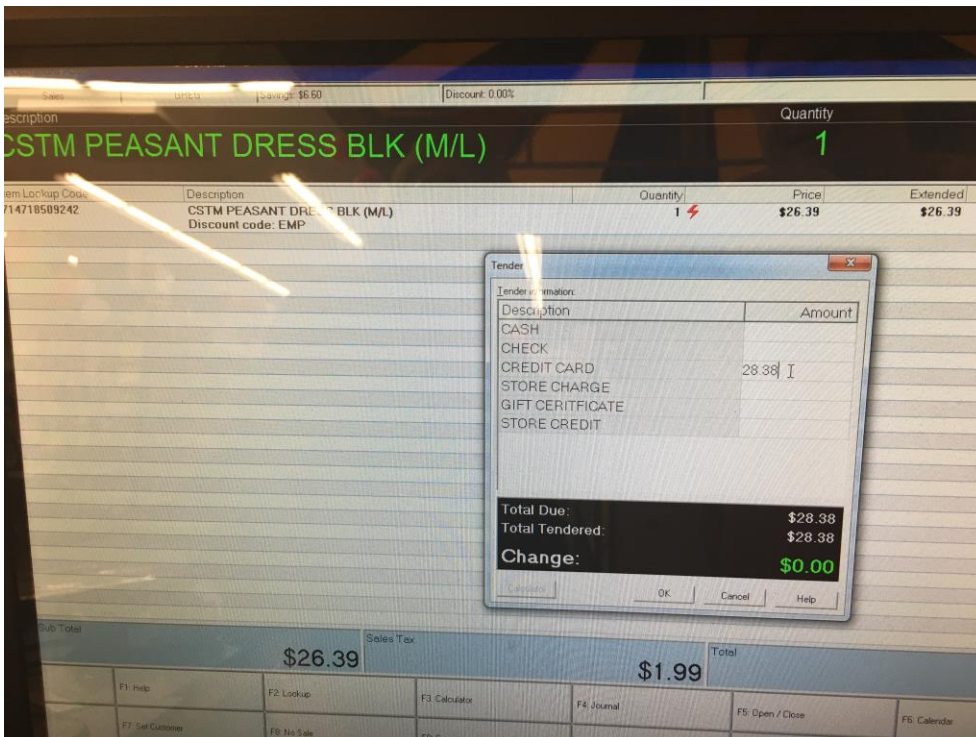


PARTIAL AUTHORIZATION INSTRUCTIONS ON A PAX S300 TERMIAL

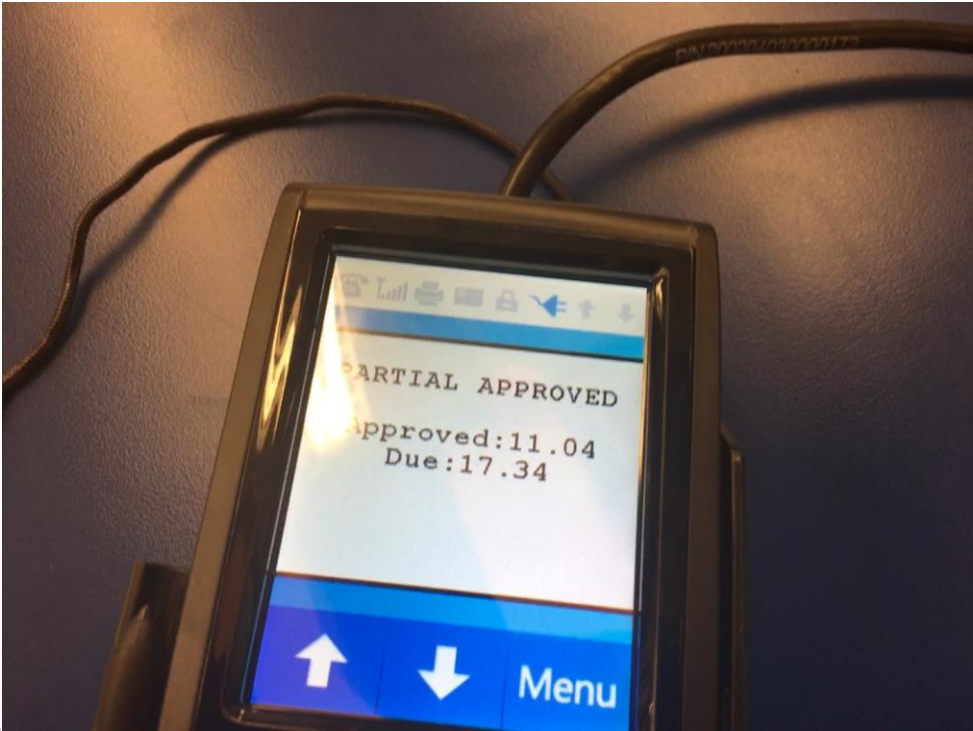
A partial authorization is when a debit card is used to pay for a transaction and the debit card does not have enough money on it for the entire transaction. Here are instruction on how to process a partial authorization on a PAX S300 terminal.

A partial authorization starts like a normal transaction. The items are rung up and the credit card tender type is selected by the cashier.



In the above picture you can see a transaction for \$28.38 has been rung up.

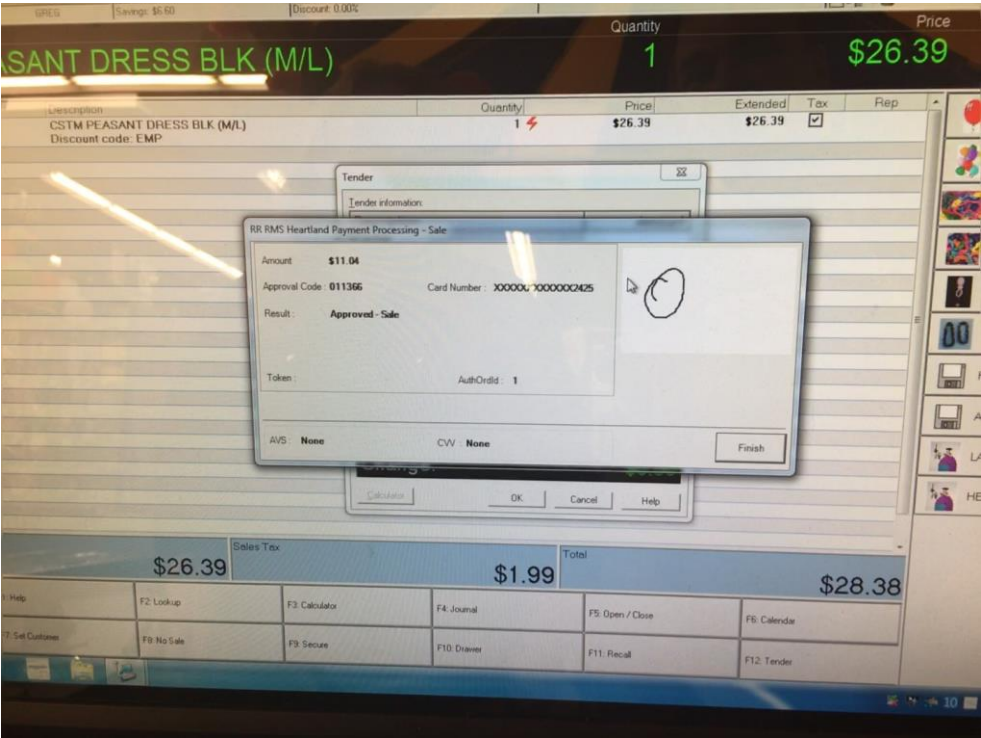
When the customer slides or inserts their card the credit card terminal will notify them the card was partially



approved.

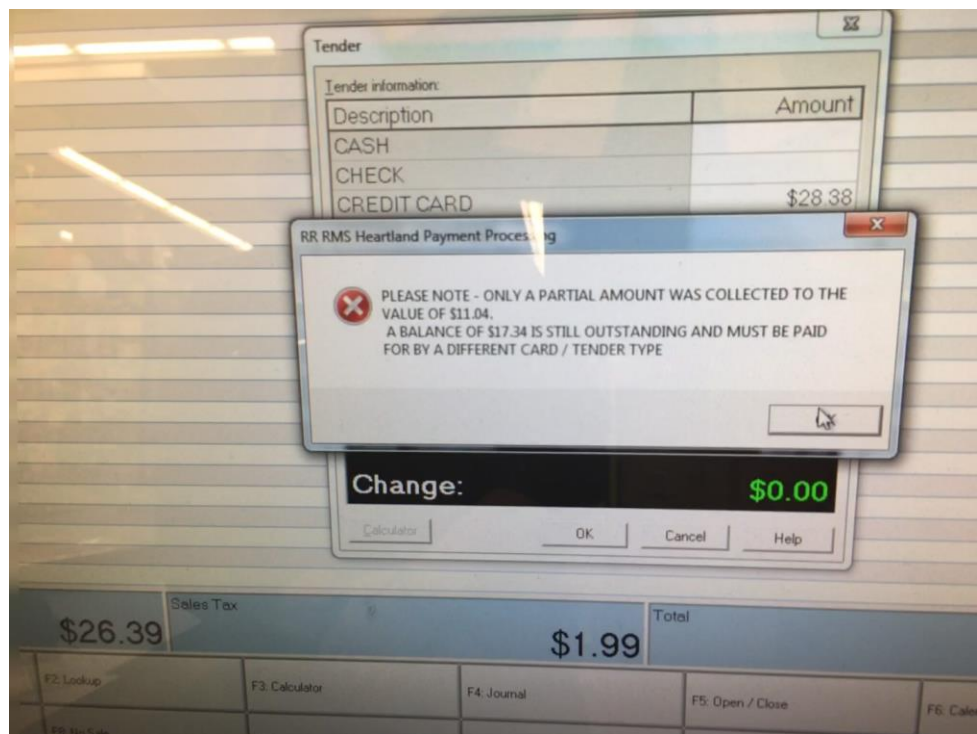
Above, you see the message the customer sees when a partial authorization happens. This card was only good for \$11.04 and the customer still owes \$17.34

The cashier will see a screen that shows the amount of the partial authorization which is less than the transaction total.



Above, the cashier will see that only \$11.04 of this transaction was paid.

After the cashier clicks on Finish, another message comes up telling the cashier they must still collect the balance of the transaction.



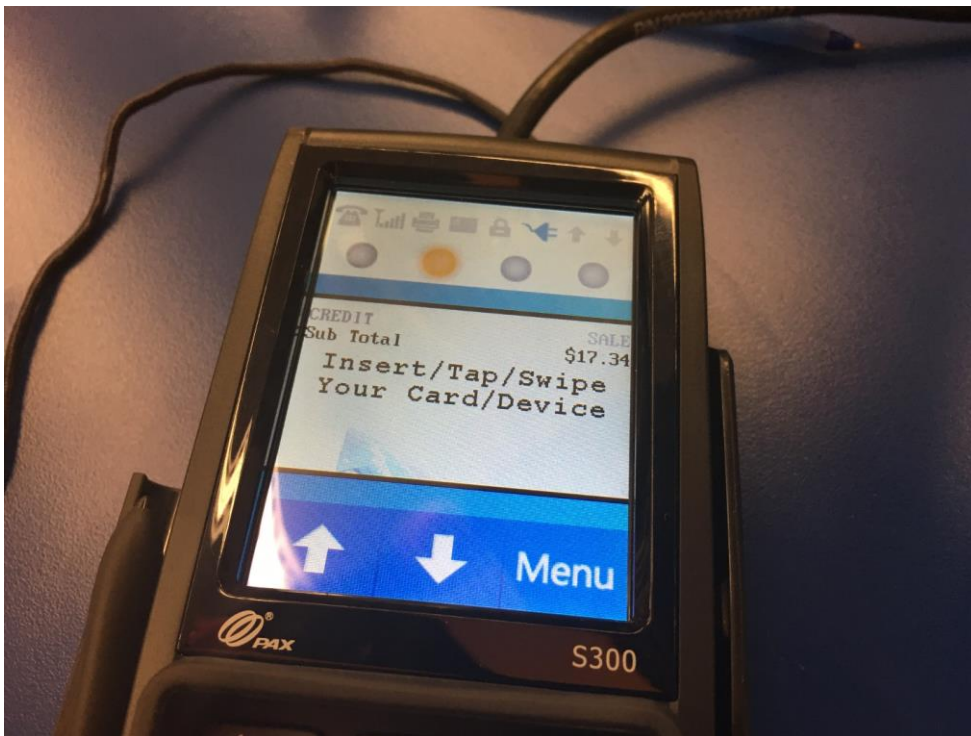
Above, the cashier will see the customer still owes \$17.34.

After the cashier clicks OK, the cashier will need to collect another form of payment for the transaction.



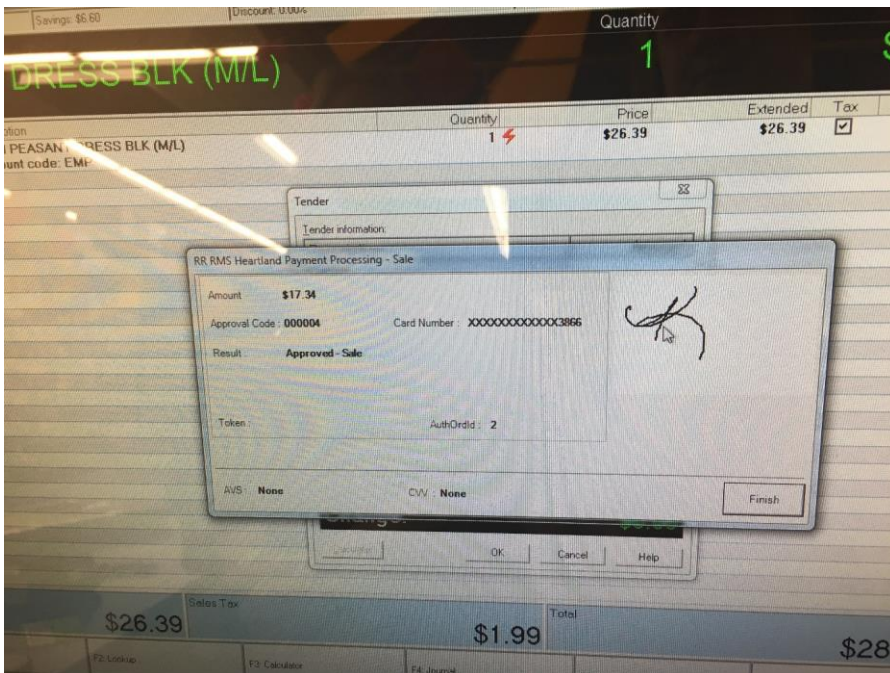
Above, the cashier can select any of the normal payment methods for the remaining balance of \$17.34.

The customer will then need to pay for the remainder of the balance.



Above, you can see the customer paid \$17.34 to finish paying for the transaction.

The cashier will then see the remainder of the transaction has been paid and click on Finish to print the receipt



Above, the cashier will see the remaining \$17.34 has been paid. If the customer cannot pay for the transaction with another form of payment, press the escape key on the keyboard to abort the transaction and refund the customer's card.

